

**For safe and secure use**

# What to do in the event of an earthquake



## What to do when an earthquake strikes!

### Protect yourself!

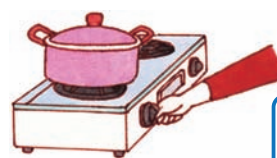
- First of all, make sure you're safe.  
(Shelves or things stored on them can fall on you, so wait for the earthquake to stop.)



**Your own safety comes first**

### Extinguish all flames!

- If you were using any gas appliances, close their valves after the tremors stop.
- When a strong earthquake (5 or more on the Japanese earthquake scale) strikes while gas is in use, the gas meter shuts off the gas flow automatically.  
(However, if gas was not in use and there was no abnormal condition, the gas meter's shut-off function will not start.)



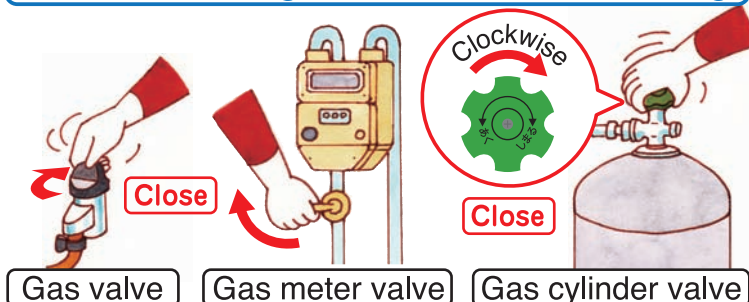
Appliance valve

**When the tremors stop**

## What to do after an earthquake occurs

- If there is a gas leak or you smell gas, do not use any gas. Close all appliance and other gas valves, the gas meter valve and gas cylinder valve. Contact your LP gas shop or the emergency contact address.
- Before evacuating, close all appliance and other gas valves, the gas meter valve and cylinder valve.

### In the event of a gas leak or before evacuating



※Inspections will be conducted in sequence to check for gas leaks and inspect gas cylinders in areas where houses and buildings have been damaged. Please cooperate with these inspections.

# Check for safety when using gas again

## ■ It is dangerous to use gas at these times.

### ✓ Check for gas leaks or the smell of gas!

If there is a gas leak or you smell gas, do not use any gas. Close all appliance and other gas valves, the gas meter valve and gas cylinder valve. Contact your LP gas shop or the emergency contact address.

### ✓ Check your gas appliances for damage!

If a gas appliance is damaged, do not use it. Contact the appliance manufacturer for repairs.

## ■ Be careful of aftershocks or power outages while using gas.

### ✓ If the gas flow is shutoff, check the display on the gas meter and reset the meter.

If the display says the gas shutoff was caused by a “pressure drop” or a “large leak,” contact your LP gas shop for an inspection.

## Gas meter (micon meter) functions and display

### ■ Earthquake-related functions

- When a strong earthquake (5 or more on the Japanese earthquake scale) strikes while gas is in use, the gas meter shuts off the gas flow automatically. However, if gas was not in use and there was no abnormal condition, the gas meter's shut-off function will not start.
- If a large flow of gas due to a damaged pipe or a detached rubber hose in an earthquake is detected, the gas flow is shut off automatically.

When an earthquake strikes



### ■ Display when the gas flow is shut off

- If the gas flow, pressure or other condition is abnormal, the meter will automatically shut off the gas flow. The display will show the reason for the shutoff.

When you have been using gas continuously for a very long time or forget to turn off a gas appliance



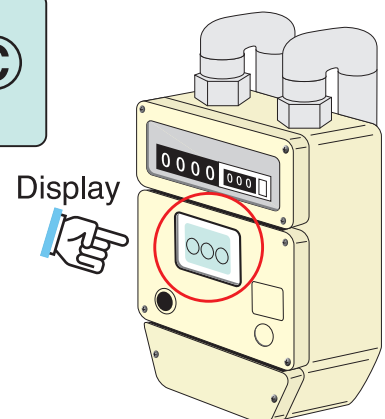
If an earthquake strikes



If the gas pressure decreases



If a rubber hose becomes detached (large leak)



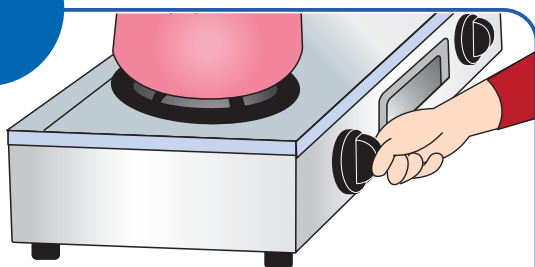
※If a gas alarm and gas meter are linked, when an alarm sounds the display will be the same when an earthquake gas shutoff has occurred.

## Resetting the gas meter

- If there is a gas leak or you smell gas, do not try to reset the meter to use gas again. Contact your LP gas shop or the emergency contact address.
- If the display does not say the gas shutoff was caused by an earthquake, contact your LP gas shop for an inspection.

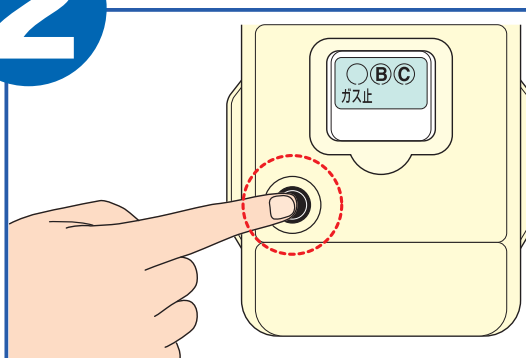
### ■ Follow these steps to begin using gas again.

1



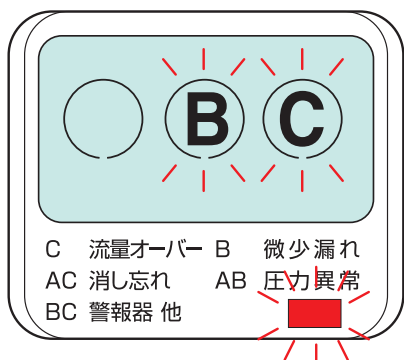
- Close all appliance valves.
- Check that all unused gas valves are closed.

2



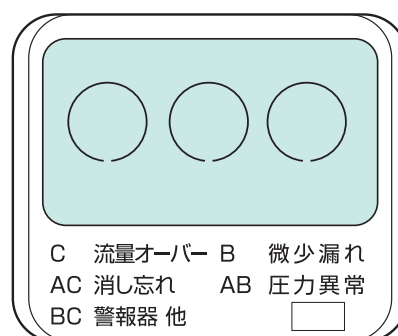
- Press the reset button on the left side.
- The “ガス止 (Gas Flow Stopped)” message goes out.

3



- Letters on the LCD and the lamp begin flashing.
- Wait for **one minute**.
- ※The reset button may have a lamp on some meters.

4



- The letters on the LCD and the lamp go out.
- Reset is complete.
- Gas can be used again.

※If your gas is not usable after you complete the reset steps (“ガス止 (Gas Flow Stopped)” is displayed again), do not repeat the reset procedure. Contact your LP gas shop for an inspection.

## Precautions when using gas appliances during a power outage

- During a power outage ventilation fans will not work, so there is a risk of CO poisoning. Make sure there is proper ventilation by opening a window when using a gas appliance. Small instantaneous gas water heaters have a large combustion capacity, so they especially need proper ventilation.
- The lack of light during a power outage may make it difficult to see, so be especially careful when using a gas appliance.

### Gas appliances using a 100 V power source

Appliances that use a 100 V power source such as water heaters and heating equipment cannot be used during a power outage.

For gas water heaters, the hot water or bath water temperature will return to the default setting when a power outage occurs. When using a gas water heater for the first time after a power outage, double-check the temperature setting.

### Be careful of frozen water pipes on gas water heaters

When a power outage lasts for a long time or a circuit breaker trips, the electric heater that prevents water pipes from freezing on a gas water heater will not work. If there is a risk of frozen water pipes, close the water supply valve (tap water valve) and drain any water remaining inside the water heater.

Check your gas water heater's instruction manual for how to drain water from the heater.



For more details, visit the website of the Liquefied Petroleum Gas Safety Commission.

<http://www.lpg.or.jp/>

### Contact address for LP GAS emergencies!

Contact address 株式会社大京

Tel. 075-661-5575

Emergency contact address is toll-free and available 24 hours a day.

### LP GAS shop

株式会社 大 京

本社  
〒601-8317 京都市南区吉祥院新田式ノ段町104-1  
TEL 075-661-5575

下山営業所  
〒622-0201 京都府船井郡京丹波町下山ユリ3-24  
TEL 0771-83-0551