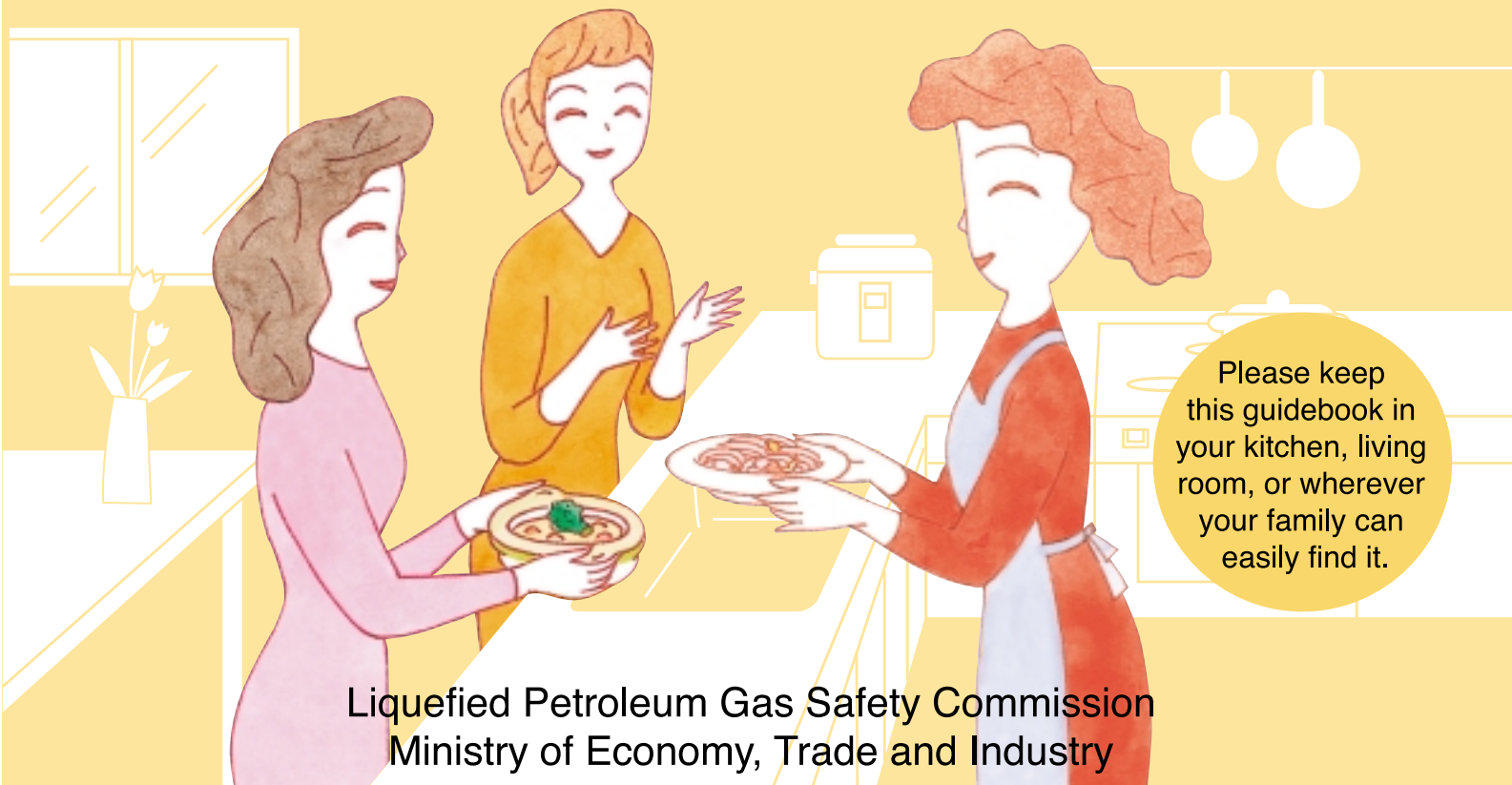


For safe and secure use

Household LP GAS safety guide

Edition for Practical Use



Foreign language versions (English, Portuguese, Chinese, Korean, Spanish) are available on the LP gas websites.

For more details, visit the homepage of the Liquefied Petroleum Gas Safety Commission.

<http://www.lpg.or.jp/>

Contact address for LP GAS emergencies!

Name of the maintenance organization 株式会社大京

☎ 075-661-5575

◎Emergency contact or LP GAS shop receives calls 24 hours a day free of charge.

LP GAS shop

株式会社 大 京

本社

〒601-8317 京都市南区吉祥院新田式ノ段町104-1
TEL 075-661-5575

下山営業所

〒622-0201 京都府船井郡京丹波町下山ユリ3-24
TEL 0771-83-0551

- We recommend that very old gas appliances be given inspections because they could cause accidents.
- If you have doubts or problems, please ask your local LP GAS shop.



For safer usage

[☒ Safety check points] to check on a daily basis

- Facilities between the LP gas cylinders and the gas meter outlet are called “supply facilities”, and the LP gas shop is responsible for inspecting, maintaining and controlling these facilities.
- Facilities between the gas meter outlet and your gas appliances are called “consumer facilities”, and you are legally responsible for managing and controlling these facilities. Daily inspections, maintenance and control must be performed by the LP gas consumers themselves.

Recommended steps to prevent snow damage

- A regulator or gas meter can be damaged by snow. Please use a snow fence or check the cylinder hut.
- When removing snow from a roof, pay attention to avoid damaging the LP GAS facilities.

☒ Checking the fins (exhaust part)

- Check fins for clogging, etc. (exhaust part)

☒ Check ventilation

- Make a habit of ensuring ventilation when using gas appliances.

- The installation site should be at least 2 meters away from any ignition source.

More than 2 meters

☒ Checking the bathroom

- Never heat an empty bathtub.

☒ Check the ignition ☒ Repeated ignition/ re-ignition ☒ Going out

- Accidents will occur if you forget to confirm proper ignition. Be sure to check visually!
- Accidents occur when gas accumulates in an appliance after repeated failures at ignition. Always be careful when attempting to ignite a gas appliance after failing the first few times.

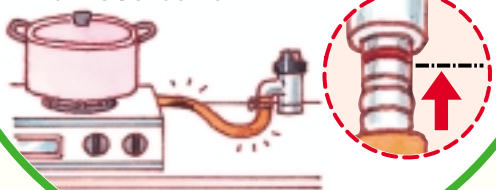
※ Is the battery dead?
※ If it is difficult to light the appliance, contact an LP gas shop immediately to have the appliance checked.

⚠ What is carbon monoxide (CO) poisoning!

If you use a gas appliance in an environment without sufficient air (oxygen), the appliance will generate carbon monoxide due to incomplete combustion. Carbon monoxide is extremely toxic. Inhaling even small amounts can cause headaches or nausea, and there is even the risk of death because a victim may become immobile before realizing that there is a problem.

✓ Rubber hose

- Are there any burn marks or cracks?
- Does the hose reach the red line on the gas valve?
- Is the hose firmly fastened with a hose band?



✓ Unused gas valve

- Is the knob [Closed]?
- Is the gas valve covered with a rubber cap?



◎ Please consult with your local LP GAS shop if you use a gas appliance with no safety device, or a water heater or bath heater with an exhaust pipe indoors.

Warning to users of FF type heaters

✓ Combustion appliances which intake and exhaust directly outdoors

- Is the exhaust pipe detached?
- Is the exhaust port blocked?
- Is the end of the exhaust pipe set outdoors?



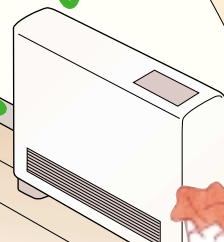
✓ Gas leak alarm

- Be sure to plug the alarm back in the plug outlet after using a vacuum cleaner etc.
- Is the plug detached?



To users of gas heaters and gas fan heaters

- Be sure to open a window to ventilate for a few minutes once or twice every hour.



✓ Always contact your local LP GAS shop when....

- Contact an LP gas shop or the appliance manufacturer immediately to have the appliance checked.
- Appliance inspections are free of charge, but if repairs or improvements are necessary, a fee may be required.



Flame

Flame is unstable

Flame is yellow

Flame is red

Operation

Flame goes out during use

Fire does not spread smoothly

Flame flares up or explodes on ignition

Difficult to ignite

Doesn't ignite

Appliance

Abnormal noise as the flame burns

A smell of gas

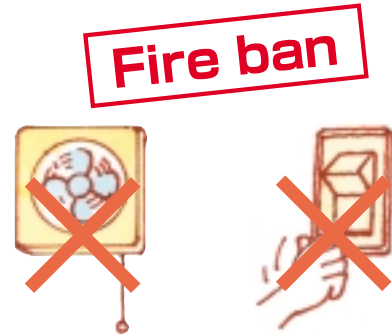
A smell of exhaust gas during operation



What do you do when you smell gas?

Never use an ignition source

- Never touch the switches of lights, ventilation fans, or other electrical appliances. These may spark and ignite fires.
- Electrical switches tend to spark when turned off. Never touch them if you smell gas.

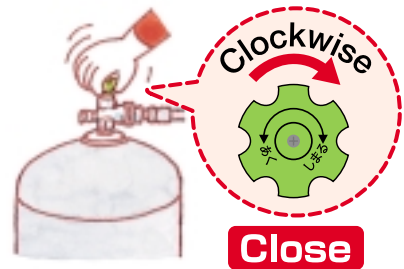


Clear out the gas from indoors

- Open doors and windows wide.
- Close all gas and appliances valves.
- Be sure to close the cylinder valve.



※ Check for gas accumulation at low places. Remember that LP GAS is heavier than air.



Report the gas leak immediately

- Call **[the emergency contact]** or **[LP GAS shop]** immediately.



Your name

Your address

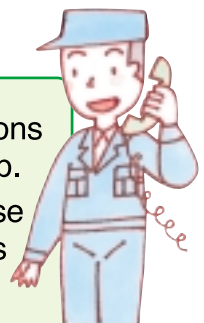
A landmark to find your house

The condition of the site

Please give these information.



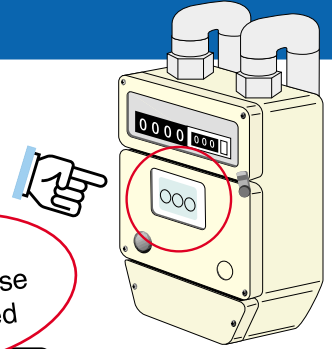
- Follow the instructions of the LP GAS shop.
- Never attempt to use gas before safety is confirmed.



- ◎ Check the emergency contact address for your local LP GAS shop (for future reference).
- ◎ Emergency contact or LP GAS shop receives calls 24 hours a day free of charge.

When your gas suddenly stops

- If the LP gas flow is abnormal, the micon meter will automatically shut off the gas supply. The display will show the reason for the shutoff.



When you use gas for an extended period or forget to turn off the gas



When an earthquake strikes



When the gas pressure or flow decreases



When a rubber hose is detached

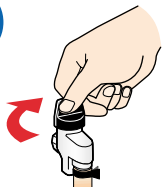


Resetting the micon meter

■ Please follow the procedure below when resuming gas use.

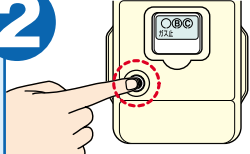
- If everything is proper, reset the gas meter (micon meter).
- If the meter doesn't reset on your first try, do not repeat the procedure. Contact the LP GAS shop and have an inspector inspect the meter.

1



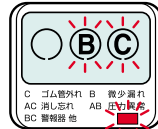
- Close all gas and appliance valves.

2



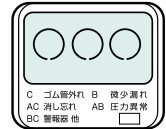
- Press the switch on the left side.
- The [ガス止 (Gas shut)] message disappears.

3



- Alphabetic characters and the red lamp flash.
- Wait for **a minute**.

4



- Flashing stops and the alphabetic characters disappear.
- Reset is complete.
- Open the valve and use.

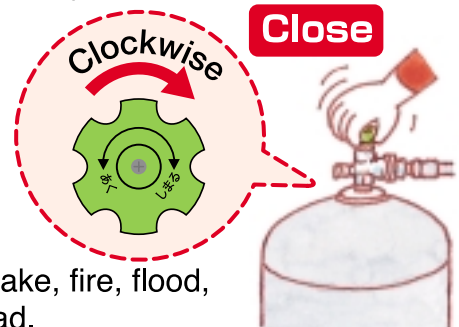
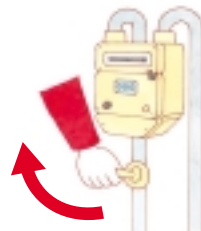
※ The [red lamp] is a liquid crystal display in some cases.

During or after an earthquake, fire, or flood

- Close the appliance valve, gas valve, gas meter valve, and cylinder valve.



Close



- If you plan to use your LP GAS after a disaster (earthquake, fire, flood, etc.), always contact your LP GAS shop first for go-ahead.

Request:

When a disaster strikes, the LP GAS shop staff will come to inspect your gas supply and appliances (site-by-site inspections). Never try to use your gas appliances before they are inspected or before you have a go-ahead from an LP GAS shop. If you can't contact the LP GAS shop, you will have to wait.

Maintenance services by LP GAS shops

Did you know? LP GAS shops offer various safety services.

As required by law, LP gas inspectors are dispatched on regular maintenance rounds to increase public awareness and to inspect and study safety conditions at consumer sites to promote safe usage of LP gas. Such activities are sometimes delegated by LP gas shops to certified maintenance organizations. Please cooperate with the inspectors from these maintenance organizations when they visit.

✓ Public awareness

- LP GAS shop regularly sends out guidelines on usage and tips on preventing accidents.



Once a year
(or every two years)

✓ Communication and handling in an emergency

- Prompt handling of gas leaks, etc.



Emergency contact is accessible 24 hours a day and on holidays.

LP GAS shop responds to all emergencies within 30 minutes free of charge.

✓ Inspection at the start of supply

- The inspector checks all LP gas facilities, including the consumer's gas appliances.



When starting up supply

✓ Supply facility inspection when changing a cylinder

- Inspector checks the area around the cylinder to confirm that nothing nearby will knock the cylinder over, etc.



When changing a cylinder (or once or more a month).

✓ Regular inspection of supply facilities

- Inspector checks the supply facilities from the regulator to the gas meter to confirm safety, the absence of leaks, etc.



Every 4 years maximum

✓ Regular inspection of consumption facilities

- Inspector checks consumption facilities such as gas appliances, intake/exhaust, hoses and pipes.



Every 4 years maximum

© [Maintenance service] is provided free of charge. Fees will be charged for the repair or improvement of a [consumption facility].

Information

“Long-term usage product safety inspection system”

Recently there have been serious accidents mainly caused by the deterioration of products as they get old and the need for measures to prevent such accidents has been recognized. To prevent accidents involving products that are difficult for consumers to maintain by themselves and that are highly likely to cause serious accidents as such products deteriorate over a long period of use, a “Long-term usage product safety inspection system” was begun on April 1, 2009 to appropriately support inspection and maintenance by consumers.

When target products such as “indoor type instantaneous gas water heaters” and “indoor type bath tub gas water heaters” start nearing the end of their standard designed usage periods as set by their manufacturers, product owners are notified that an inspection will need to be done by the manufacturer, and then an inspection of statutory items will be performed. There will be a fee charged for the inspection.

Inspection of older products

Products manufactured before April 1, 2009 are not targets for statutory inspections, however, an inspection similar to the statutory inspection can be performed upon the consumer's requests. A fee will also be charged for such inspections, but may vary depending on the product model or manufacturer. Contact the appliance manufacturer for details.